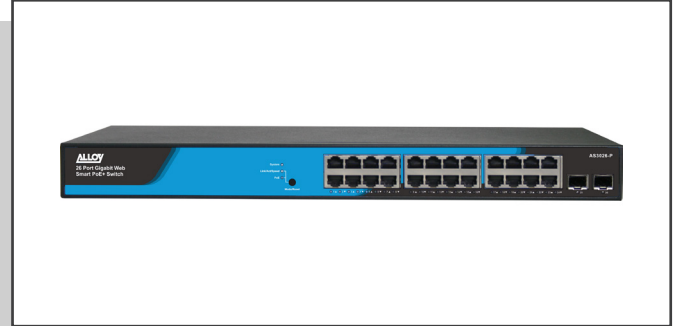


AS3026-P

26 Port Web Smart Gigabit POE+ Switch

- *Limited Lifetime Warranty*
- *Next Day Replacement**
- *Local Technical Support*



The Alloy AS3026-P Web Smart Gigabit POE+ Switch consists of 24x 10/100/1000Mbps Gigabit Copper UTP Ports and 2x paired dual speed 1000M/100M SFP Ports. With a comprehensive range of powerful Layer 2 features, the AS3026-P switch is ideal for businesses of all sizes.

All SFP Ports support both 100M and 1000M SFP modules allowing easy upgrade paths for existing cabling and network infrastructure.

The AS3026-P switch complies with both IEEE 802.3at and af Power over Ethernet standards. With all stand-alone RJ-45 ports supporting PoE+, devices such as IP Phones and Wireless Access Points can now be connected directly to the network with data and power supplied over a single UTP cable, reducing deployment and maintenance costs and making it much easier to install devices exactly where they are required. With support of 802.3at PoE+, up to 30 watts of power can be supplied per port, so power hungry devices such as Pan Tilt Zoom IP Security Cameras can be connected directly to the network.

The AS3026-P has an embedded Device Managed System (DMS) which provides users with complete control over their network connected devices. The AS3026-P is the ideal switch to deliver management simplicity, better user experience, and lowest total cost of ownership.

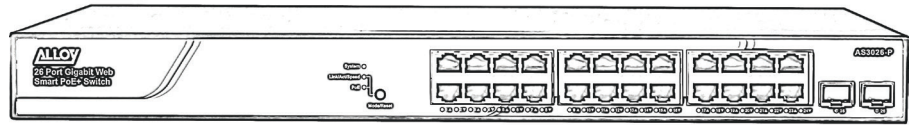
Key Features

- Web Smart+ features provide easy management, basic security and QoS
- Built in Device Management System (DMS)
- DHCP Server
- PoE Port configuration and scheduling
- IEEE 802.3af/at Power over Ethernet
- IEEE 802.3az EEE Energy Efficient Ethernet standard for green Ethernet
- Dual Speed SFP ports supporting both 100M and 1000M SFP Modules
- Limited Lifetime Warranty

© Copyright 2020 Alloy Computer Products.

The information contained herein is subject to change without notice. Alloy shall not be liable for technical or editorial errors or omissions contained herein.

AS3026-P



Specifications

Port Configuration

Total Ports	10/100/1000Mbps RJ-45 Ports	SFP Ports
26	24	2

POE Power Capacity

Available POE Power	Number of Ports Supported
185W	Ports 1 - 24 support both 802.3at/af

Hardware Performance

Forwarding Capacity	Switching Capacity	MAC Table	Jumbo Frames
38.68Mpps	52Gbps	8K	9216Bytes

Voltage and Frequency

Input Voltage	Frequency
100 - 240 VAC	50 - 60Hz

Environmental

Operating Temperature		Storage Temperature		Altitude		Operating Humidity
Fahrenheit	Celsius	Fahrenheit	Celsius	Feet	Metres	
32 to 122	0 to 50	-4 to 158	-20 to 70	<10000	<3000	10 to 90% Non-condensing

Weights, Dimensions and Mounting

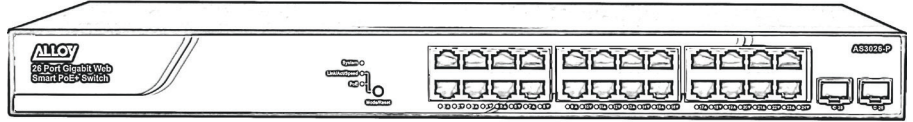
Dimensions (W x H x D)		Weight		Mounting
MM	Inches	Kg	Pounds	
442 x 44 x 211	17.4 x 1.7 x 8.3	< 3	< 6.6	Desktop and Rackmount

Warranty and Compliance

Warranty	Compliance
Alloy Limited Lifetime Warranty	RCM, CE, FCC Part 15 Class A

AS3026-P

Specifications



Software Features

Layer 2 Switching

Spanning Tree Protocol (STP), Trunking, VLAN's, DHCP Relay, IGMP Snooping, IGMP Querier, IGMP Proxy, MLD v1/v2 Snooping, Multicast VLAN Reistration (MVR)

Security

Secure Shell (SSH), Secure Sockets Layer (SSL), IEEE 802.1x, Layer 2 Isolation Private VLAN Edge, Port Security, IP Source Guard, RADIUS/TACACS+, Storm Control, DHCP Snooping, Loop Protection, ACLs

Quality of Service

Hardware Queues, Scheduling, Classification, Rate Limiting

Management

Port Mirroring, LLDP, Web GUI Interface, Dual F/W Image, UPnP, DHCP Server, RMON, SNMP, s-FLOW, Firmware Upgrade, NTP, HTTP/HTTPS, DHCP Client, Cable Diagnostics, Syslog, Telnet, IPv6

Device Management System (DMS)

Graphical Monitoring, Find My Switch, Traffic Monitoring, Troubleshooting

Power over Ethernet (POE)

Port Configuration, POE Scheduling, Auto-checking, Power Delay, Soft Reboot PoE Supply

Australian Office

4/585 Blackburn Road, Notting Hill
Victoria, 3168, Australia
+61 3 85629000 | sales@alloy.com.au

Philippines Office

9 Pinagmisahan Street, Summerville, Dela Paz
Antipolo City 1870, Philippines
+63 2 535 7502 | sales@alloy.com.ph

Package Contents

- AS3010-P Switch
- Power Cable
- Warranty Information
- Rubber Feet and Rackmount Kit

Compliance

* Next day replacement to major capital cities only and is reliant on courier delivery time frames

© Copyright 2020 Alloy Computer Products.
The information contained herein is subject to change without notice. Alloy shall not be liable for technical or editorial errors or omissions contained herein.